



® JiangYin HuaFang New Technology & Scientific Research Co.,Ltd

Add: No.11,XiZhang Road,ChangShou,ZhouZhuang Town,JiangYin,China

Web: www.h-fang.com

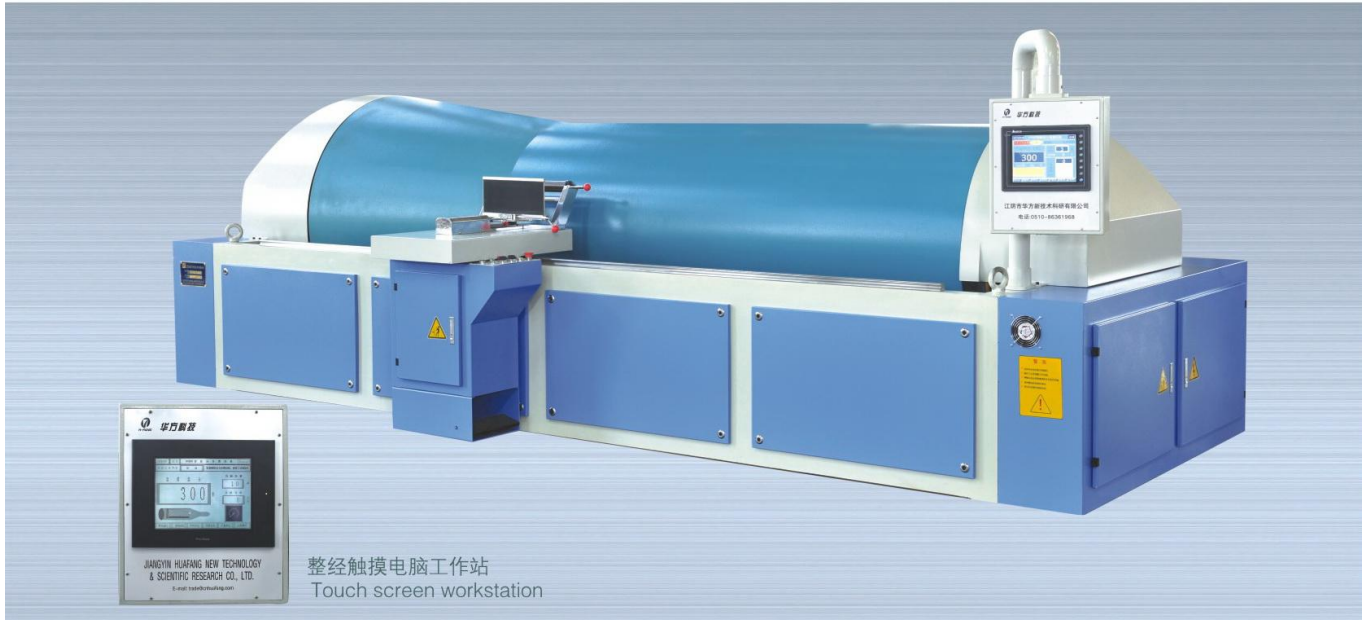
Tel: 0086 510-863608558

Fax:0086 510-86366207

Email:twj@h-fang.com

Technical Files

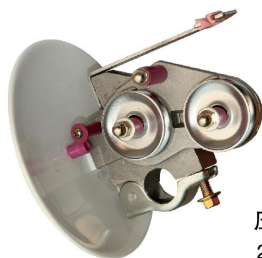
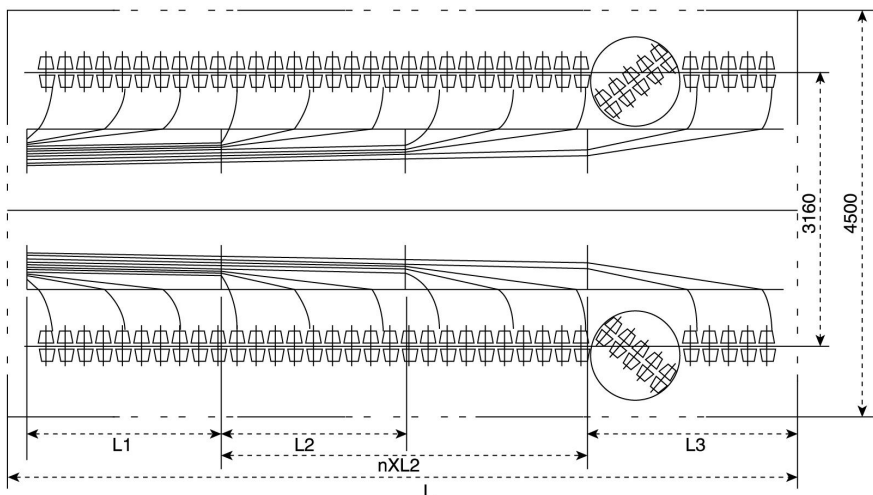
HF988C Intelligent Sectional Warping Machine



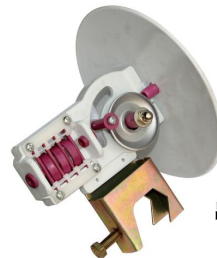


矩形回转式筒子架尺寸 Turnover H creel

锭距 Pitch 头数 Ends	400					480					560					640					层数 Row
	L1	L2	L3	L	n	L1	L2	L3	L	n	L1	L2	L3	L	n	L1	L2	L3	L	n	
230x230	2660	2640	1550	6850	1	2660	2640	2730	8030	1	2660	2640	1550	9490	2	2660	2640	2730	10670	2	8
250x250	2860	2840	1650	7350	1	2860	2840	2930	8630	1	2860	2840	1650	10190	2	2860	2840	2930	11470	2	8
270x270	3060	3040	1750	7850	1	3060	3040	3130	9230	1	3060	3040	1750	10890	2	3060	3040	3130	12270	2	8



压片二柱式张力器
2-pillar tensioner



吊环式自动补偿张力器
Ring type tensioner



Commercial Clauses

Appendix 1: The main characteristics for HF988C

- 1) Working width: 2300mm
- 2) Beam diameter: 1000mm
- 3) Warping speed: 0—800m/min
- 4) Beaming speed: 0—160m/min
- 5) Deviation of beaming tension: $\leq \pm 2\%$
- 6) Braking distance: $\leq 2\text{m}$ (500m/min)
- 7) Drum diameter: 1000mm
- 8) Drum tapering: 1:6
- 9) Cone length: 1380mm
- 10) Section traverse speed: 0.001—9.999mm/r stepless
- 11) Section positioning accuracy: $\leq 0.01\text{mm}$
- 12) Section traverse accuracy: 0.02%
- 13) Section width: 0—500mm
- 14) High level Electric configuration
 - MITSUBISHI PLC
 - Advanced servo system
 - Step motor
 - Touch screen computer workstation
- 15) Fully computerized automatic control for
 - input varieties data of yarn information,
 - automatic calculation
 - precise movement of warping table,high intelligence
- 16) Desired beaming tension can be before or during beaming to ensure perfect winding result.
- 17) Big touch screen,clear,rich information content,easy operation,displaying detailed warping condition and trouble shooting for electric and air components.
- 18) Start point locating and section alignment to be set easily by one key.
- 19) Advanced field bus technology available for easy transmission of any signal from any part of the machine,fully automatic operation for testing,trouble shooting and parameter setting.
- 20) Pneumatic car-use disc brake,reliable and large brake moment.
- 21) With the increasing thickness of the yarn,warping table which controlled by independent imported step motor will move backwards automatically to ensure the constant space between



spacing reed and yarn surface.This space can be set according to different processing demand.

- 22) Warping-head's horizontal movement is controlled by a SERVO motor. Positions of leasing reed and creel are fixed.The central of warp yarn section is always in beeline thus ensure even tension of both section sides.
- 23) Fixed 1:6 taper drum 1380mm long for machine diameter of beam flange 1000mm,made of thin sheet steel,high precise dynamically balanced,fit for all types of yarns.
- 24) Pneumatic three-point automatically positioning leasing reed,high efficiency and work in short time.
- 25) Guide rail and infrared raster available to guarantee the safety of beaming operation.
- 26) 480 ends of turnover H creel,cone pitch 250×250mm , 6 layers, 2-Pillar tensioner
- 27) The creel with infrared broken end stop motion device.
- 28) Warping workstation with static eliminator.
- 29) The language of touch screen menu can be changed between Chinese and English.

Appendix 2: The main components configuration for HF988C

NO.	NAME	TYPE	QTY.	BRAND OR ORIGIN
1	PLC	Fx3U	1	mitsubishi
2	Touching screen	10.1"	1	SCHNEIDER
3	Touching screen	7"	1	SCHNEIDER
4	Frequency Inverter	18.5KW	1	DELTA
5	Servo drive	1.5KW	1	SCHNEIDER
6	Servo motor	1.5KW	1	SCHNEIDER
7	Encoder	E6B2-CWZ1X 1000P/R	1	光洋 KOYO
8	Infrared switch	BX15M-TFR	2	AUTONICS
9	Contactore		1	SCHNEIDER
10	Button,switch		1	SCHNEIDER
11	Breaker		1	正泰 CHINT
12	Line guide	HGW35CA2R (L) Z0	1	HIWIN TAIWAN
13	Line guide	HGW15CA1R200Z0	1	HIWIN TAIWAN
14	Line guide	HGW25CA1R300Z0	2	HIWIN TAIWAN
15	Motor	Y2160M-6 B3 11Kw	1	皖南电机 WNM
16	Motor	Y2160L-4 B3 18.5KW	1	皖南电机 WNM



JiangYin HuaFang New Technology & Scientific Research Co.,Ltd

Add: No.11,XiZhang Road,ChangShou,ZhouZhuang Town,JiangYin,China

Web: www.h-fang.com

Tel: 0086 510-863608558

Fax:0086 510-86366207

Email:twj@h-fang.com

Appendix 3: Spare parts list of HF988C

NO.	NAME	TYPE	QTY.
1	Brake sheet		8Pcs
2	Sealing washer for brake cylinder		1PC
3	2 position-5way electromagnetic valve	200	1Pc
4	2 position-5way electromagnetic valve	300	1Pc
5	2 position-5way electromagnetic valve	300	1Pc
6	Sealing washer for cylinder	63X250-40X250	1Pc
7	Button		2Pcs
8	Tensioner		20Pcs
9	Proximity switch		2Pcs
10	Alumina pieces		20Pcs
11	Synchronous belt	250	1Pc
12	Synchronous belt	285	1Pc
13	Fitter's tool		1Pc
14	Beaming metal band		2Pcs
15	Air pipe joint	φ6、 8、 12mm	3Pcs
16	Air pipe	φ6mm	2M
17	Air pipe	φ8mm	20M
18	Air pipe	φ12mm	20M
19	Copper nut for screw rod		1Pcs
20	Breaker	HH53P	1Pcs